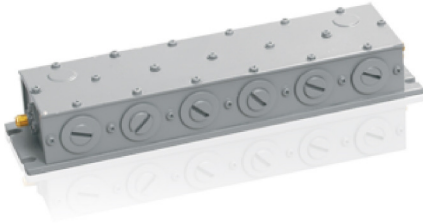




# CHN Series

## Standard Cavity Bandreject Filter



### Overview

The series CRN filters cover a frequency range from 30 MHz to 400 MHz. Percent 3 dB bandwidth ranges from 0.2% to 3%. The CRN series uses 1/4 wavelength resonant structures.

Units are available with two through six sections providing a Chebyshev response with low insertion loss. VSWR is less than 1.5:1. Each unit is housed in a high "Q" sturdy aluminum case. Cavities are iris coupled and shielded to minimize RF leakage.

### Specifications

#### Electrical Specifications

Center Frequency Range	30 to 400 MHz
Min. 3dB Relative Bandwidth (in % of center frequency)	0.5% to 3.0%
Maximum Insertion Loss at Center Frequency	Consult Factory
Nominal Impedance	50/75 Ohms
Maximum VSWR at Center Frequency	1.5:1
Stopband Attenuation	Consult Factory
Number of Sections	2 to 6
Average Input Power (Watts Max. to 10,000 ft.)	See (1) Below
Peak Input Power (Watts Max. to 10,000 ft.)	See (1) Below
<b>Environmental Specifications</b>	
Shock	5 G's
Vibration	5 G's
Humidity	90%
Altitude	Unlimited
Operating Temperature	0° to 50°C
Non-Operating Temperature	-54° to +71°C

#### Length (in.) vs. Number of Sections

Sections	L Dim.
2	2.500
3	3.625
4	4.750
5	5.875
6	7.000

Vertical mounting configurations are available.

#### Width (in.) vs. Frequency

Frequency Range	W Dim.	D Dim.	H Dim.
30 - 50	3.875	.625	2.625
51 - 65	2.875	.625	1.625
66 - 100	2.375	.625	1.125
101 - 400	1.875	.375	1.125

#### Connectors

Connector Style	Code	C Dim.
N Female	A	.985
N Male	B	.825
BNC Female	C	.715
BNC Male	D	.850
TNC Female	E	.715
TNC Male	F	.850
SMA Female	K	.375
SMA Male	L	.570
F Type Female	X	.625
Special	S	-

(1)Dependent upon center frequency and percent bandwidth. Please consult factory for rated power.



*Need help now? Visit [Mtronpti.com](http://Mtronpti.com) and click...*

 [Request a Quote](#)  [Find a Rep or Distributor](#)  [Contact](#)

### **Orlando**

2525 Shader Rd  
Orlando, FL 32804 USA  
Phone: 407-298-2000  
Fax: 407-293-2979

### **Shanghai**

Room 2215, 22/F  
Tomson Commercial Building  
710 Dongfang Road  
Pudong, Shanghai, China  
Phone: 86-21-6165-2282  
Fax: 86-21-6165-2283

### **Yankton**

1703 E. Highway 50  
Yankton, SD 57078-0630 USA  
Phone: 605-665-9321  
Toll Free: 800-762-8800  
Fax: 605-665-1709

### **Asia Pacific**

Unit 1108, 11<sup>th</sup> Floor, APEC Plaza  
48 Hoi Yuen Road  
Kwun Tong, Kowloon, Hong Kong, China  
Phone: 852-2866-8023  
Fax: 852-2529-1822

### **India**

Noida  
SDF-D3 Zone (NSEZ) Special Economic  
Noida - 201305 (U.P.)  
New Delhi, India  
Phone 91-120-256-2014  
Fax: 91-120-256-3242

### **Europe**

Bolwerk 26  
Veldhoven – 5509 MH  
Netherlands  
Phone: 31-40-368-6818  
Fax: 31-40-368-3501

MtronPTI may change specifications without notice to improve end application performance or product manufacturability.  
No liability is assumed as a result of product use or application.  
Please contact MtronPTI for latest information.

Copyright © 2014 MtronPTI