



SPECIFICATION FOR RoHS 6 COMPLIANT HCMOS TCXO MtronPTI P/N M6300S085

Electrical Specifications:

Parameter	Symbol	Min.	Typ.	Max.	Units	Conditions
Frequency of Operation	F _O		50.000000		MHz	
Initial Accuracy		-1		+1	ppm	@ +25°C
Frequency Stability						
vs. Temperature	ΔF/F			4.6	ppm	Over operating temperature range (F _{Max} - F _{Min})/2
Frequency Vs. Aging		-3		+3	ppm	First year.
		-1		+1	ppm	Per year thereafter.
Frequency Vs. Supply			± 0.4		ppm	5% supply variation
Frequency Vs. Load			± 0.2		ppm	5% load variation
RF Output						
Output Type		HCMOS				
Output Load		15			pF	
Symmetry (duty cycle)	T _{DC}	45		55	%	½ V _{DD}
Logic "1" Level	V _{OH}	90% V _{CC}			V	HCMOS load
Logic "0" Level	V _{OL}			10% V _{CC}	V	HCMOS load
Rise/Fall Time	T _R /T _F			3	nS	From 10% to 90% V _{CC}
Supply Voltage & Power Consumption						
Operating Voltage	V _{CC}	3.135	3.3	3.465	V	
Operating Current	I _{CC}			90	mA	

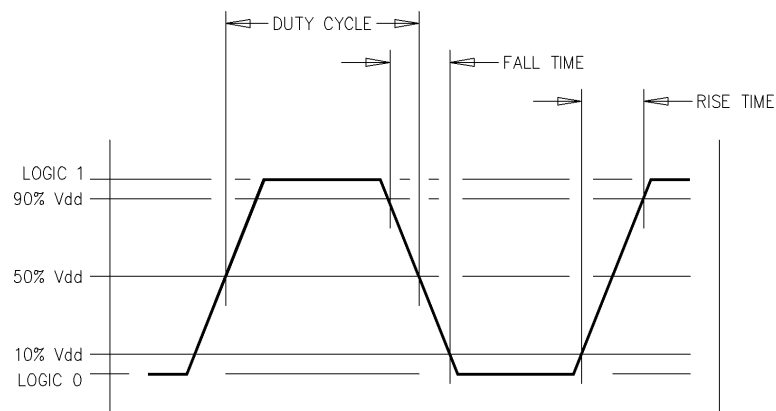
Environmental Conditions:

Parameter	Symbol	Min.	Typ.	Max.	Units	Conditions
Operating Temperature	T _A	-55		+125	°C	
Storage Temperature	T _S	-55		+125	°C	
Shock	Per MIL-STD-202, Method 213, Condition C (100 g's, 6 ms duration, ½ sinewave)					
Vibration	Per MIL-STD-202, Method 201 & 204 (10 g's from 10-2000 Hz)					
Thermal Shock	Per MIL-STD-883, Method 1011, Condition A					
Thermal Cycle	Per MIL-STD-883, Method 1010, Condition B					
Hermeticity	Per MIL-STD-202, Method 112 (1 x 10 ⁻⁸ atm cc/s of helium)					
Moisture Sensitivity Level (MSL)	MSL 1					
Solderability	Per EIAJ-STD-002					
Max. Soldering Conditions	See Figure 1.					
Package Type	6-pad 5.0 X 7.0 X 1.9 mm leadless ceramic. RoHS compliant. M6300-Series					

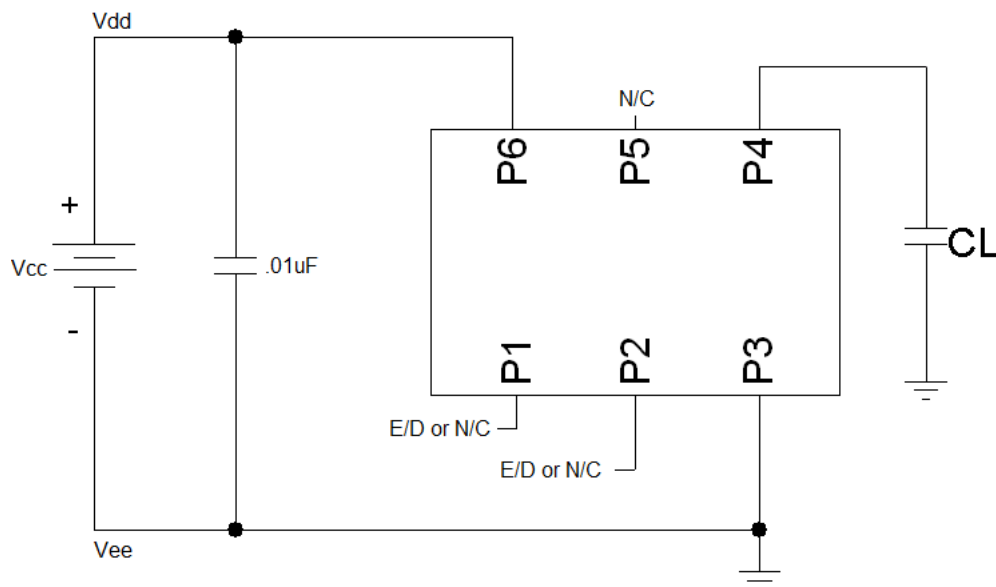


SPECIFICATION FOR RoHS 6 COMPLIANT HCMOS TCXO MtronPTI P/N M6300S085

Output Waveform:



Typical Test Circuit & Load Circuit Diagrams:





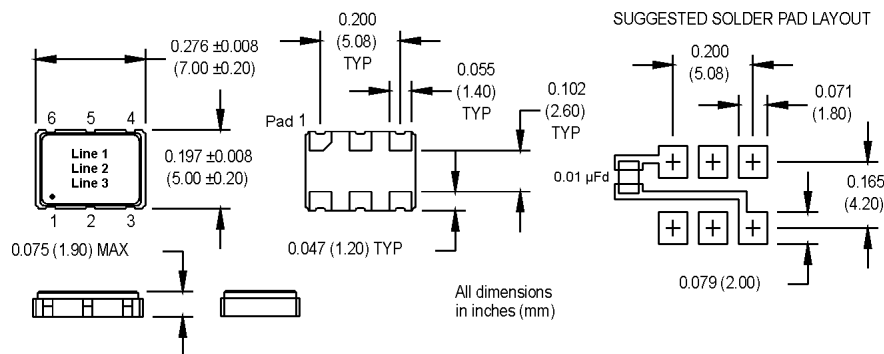
SPECIFICATION FOR RoHS 6 COMPLIANT HCMOS TCXO MtronPTI P/N M6300S085

Mechanical, Marking, and Pin Out Information:

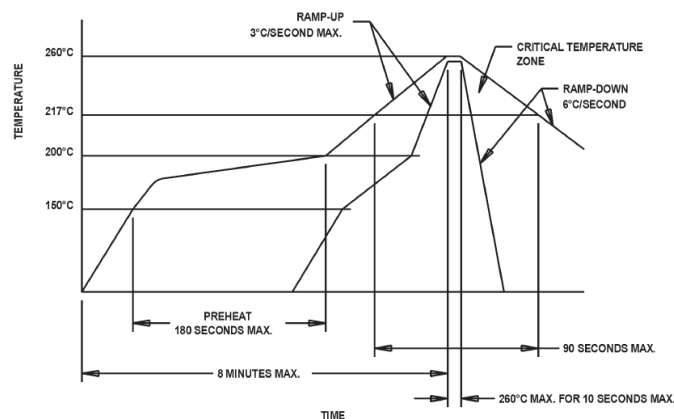
Part Marking	
Line 1	M6300S085
Line 2	50M0000
Line 3	MPTI yyww

Legend	
yy	Year
ww	Work week

Pin	Function
1	N/C
2	N/C
3	Ground
4	Output
5	N/C
6	+V _{CC}



Soldering Conditions:



Datasheet Revision Table:

Date	Rev.	Author	Details of Revision
07/20/15	0	MM	Original release.