



SPECIFICATION FOR RoHS 6 COMPLIANT LVDS OUTPUT SMT TCXO MtronPTI P/N M6300S086

Electrical Specifications:

Parameter	Symbol	Min.	Typ.	Max.	Units	Conditions
Frequency of Operation	F_O		211.353600		MHz	
Frequency Tolerance		-1.0		+1.0	ppm	@ +25°C
Frequency Stability						
Overall Stability		-7		+7	ppm	Including vibration, deviation over temperature, 1 st year aging and supply variation.
RF Output						
Output Type		Differential LVDS Compatible				
Output Load		100 Ω Differential			V	
Common Mode Output Voltage			1.2		V	
Differential Output Voltage		250	350	450	mV	LVDS Load
Symmetry (duty cycle)	T_{DC}	45		55	%	Referenced to 1.25 V
Output Skew			20		pS	
Rise/Fall Time	T_R/T_F			0.35	nS	From 20% to 80% V_{CC}
Other Parameters						
Sub-harmonics				-50	dBc	To be verified.
Spurious modes				-70	dBc	
Phase Noise			-128		dBc/Hz	@ 10 kHz
G-sensitivity			2.5		ppb/g	
Supply Voltage & Power Consumption						
Operating Voltage	V_{CC}	3.135	3.3	3.465	V	
Operating Current	I_{CC}			100	mA	

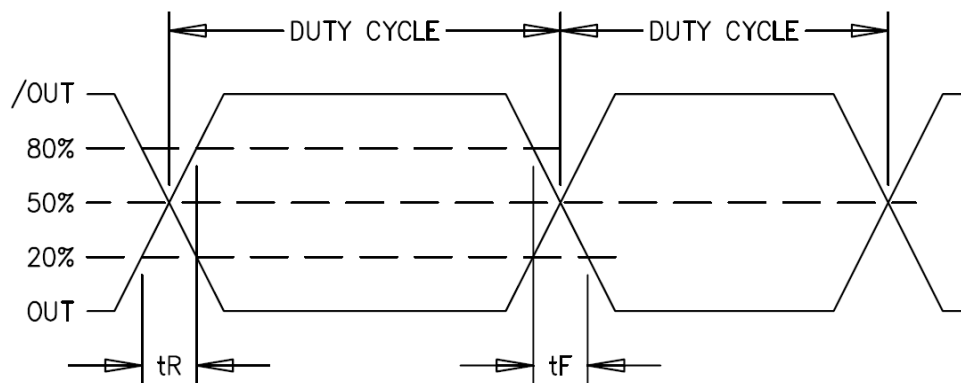
Environmental Conditions:

Parameter	Symbol	Min.	Typ.	Max.	Units	Conditions
Operating Temperature	T_A	-40		+95	°C	
Storage Temperature	T_S	-55		+125	°C	
Shock	Per MIL-STD-202, Method 213, Condition C (100 g's, 6 ms duration, ½ sinewave)					
Vibration	Per MIL-STD-202, Method 201 & 204 (10 g's from 10-2000 Hz)					
Thermal Shock	Per MIL-STD-883, Method 1011, Condition A					
Thermal Cycle	Per MIL-STD-883, Method 1010, Condition B					
Hermeticity	Per MIL-STD-202, Method 112 (1 x 10 ⁻⁸ atm cc/s of helium)					
Moisture Sensitivity Level	MSL 1					
Altitude	0 to 65000 ft., at up to ±1psi/sec					
Solderability	Per EIAJ-STD-002					
Max. Soldering Conditions	See Figure 1.					
Package Type	6-pad 5.0 X 7.0 X 1.9 mm leadless ceramic. RoHS compliant.					

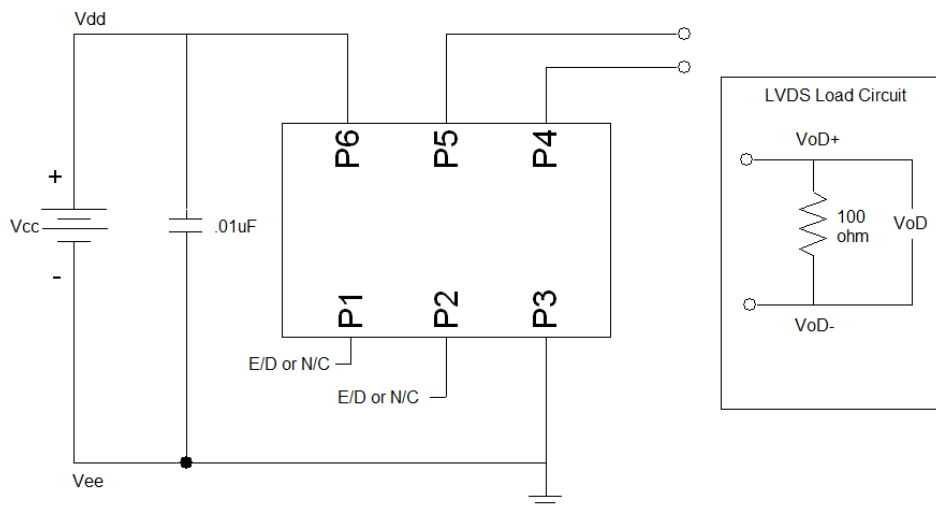


SPECIFICATION FOR RoHS 6 COMPLIANT LVDS OUTPUT SMT TCXO MtronPTI P/N M6300S086

Output Waveform:



Typical Test Circuit & Load Circuit Diagrams:





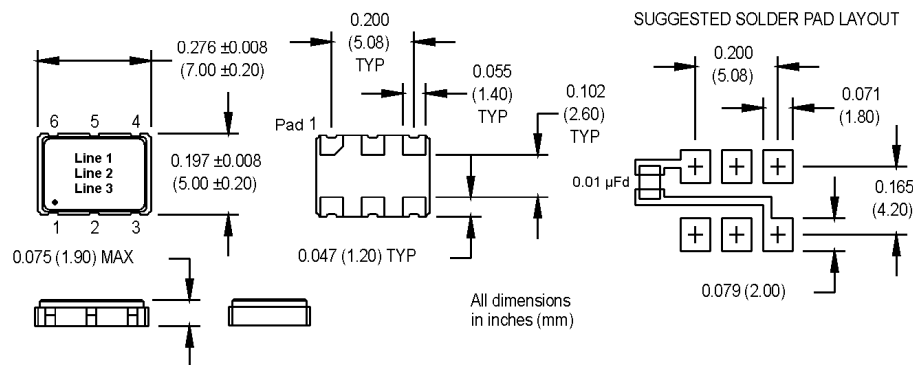
SPECIFICATION FOR RoHS 6 COMPLIANT LVDS OUTPUT SMT TCXO MtronPTI P/N M6300S086

Mechanical, Marking, and Pin Out Information:

Part Marking	
Line 1	M6300S086
Line 2	211M3536
Line 3	MPTI yyww

Legend	
yy	Year
ww	Work week

Pin	Function
1	N/C
2	N/C
3	Ground
4	Output
5	Complementary Output
6	+V _{CC}



Soldering Conditions:

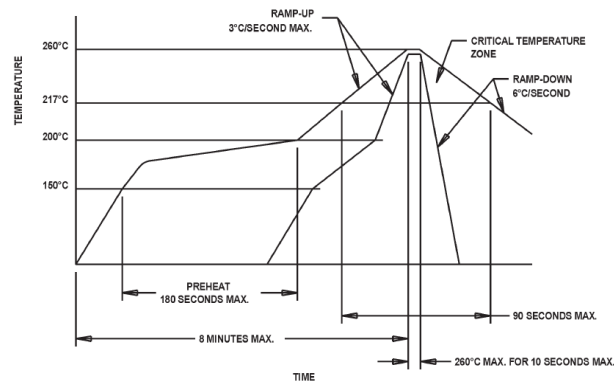


Figure 1

Datasheet Revision Table:

Date	Rev.	Author	Details of Revision
08/18/15	0	MM	Original release.