



SPECIFICATION FOR 1.8V CML SMT TCXO MtronPTI P/N M6302S041

Electrical Specifications:

Parameter	Symbol	Min.	Typ.	Max.	Units	Conditions
Frequency of Operation	F_O		156.250000		MHz	
Frequency Tolerance		-1.0		+1.0	ppm	@ +25°C
Frequency Stability						
vs. Temperature	$\Delta F/F$			4.6	ppm	(Max-Min)/2
vs. Aging		-3		+3	ppm	1 st year
		-1		+1	ppm	Per year thereafter.
RF Output						
Output Type			CML			
Output Load			100 Ω Differential		V	
Differential Output Voltage		300	425	500	mV	CML Load
Symmetry (duty cycle)	T_{DC}	45		55	%	50% ($V_{OH} - V_{OL}$)
Rise/Fall Time	T_R/T_F			0.35	nS	From 20% to 80% V_{CC}
Supply Voltage & Power Consumption						
Operating Voltage	V_{CC}	1.71	1.80	1.89	V	
Operating Current	I_{CC}			125	mA	

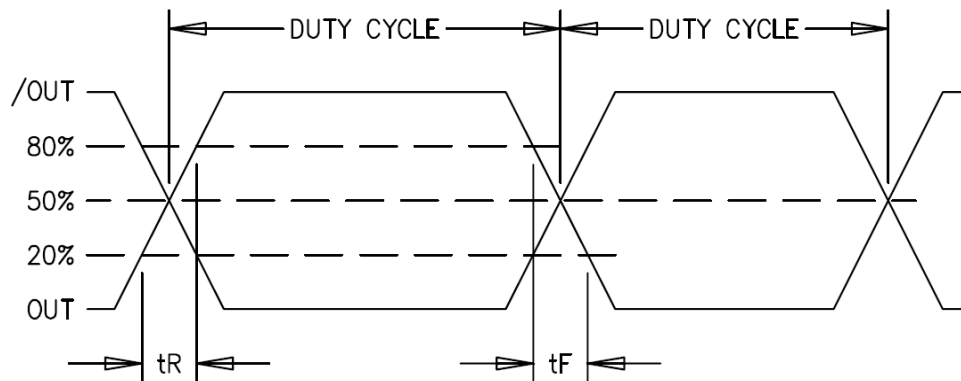
Environmental Conditions:

Parameter	Symbol	Min.	Typ.	Max.	Units	Conditions
Operating Temperature	T _A	-55		+125	°C	
Storage Temperature	T _S	-55		+125	°C	
Shock	Per MIL-STD-202, Method 213, Condition C (100 g's, 6 ms duration, ½ sinewave)					
Vibration	Per MIL-STD-202, Method 201 & 204 (10 g's from 10-2000 Hz)					
Thermal Shock	Per MIL-STD-883, Method 1011, Condition A					
Thermal Cycle	Per MIL-STD-883, Method 1010, Condition B					
Hermeticity	Per MIL-STD-202, Method 112 (1 x 10 ⁻⁸ atm cc/s of helium)					
Moisture Sensitivity Level (MSL)	MSL 1					
Solderability	Per EIAJ-STD-002					
Max. Soldering Conditions	See Figure 1.					
Package Type	6-pad 5.0 X 7.0 X 1.9 mm leadless ceramic. RoHS compliant.					

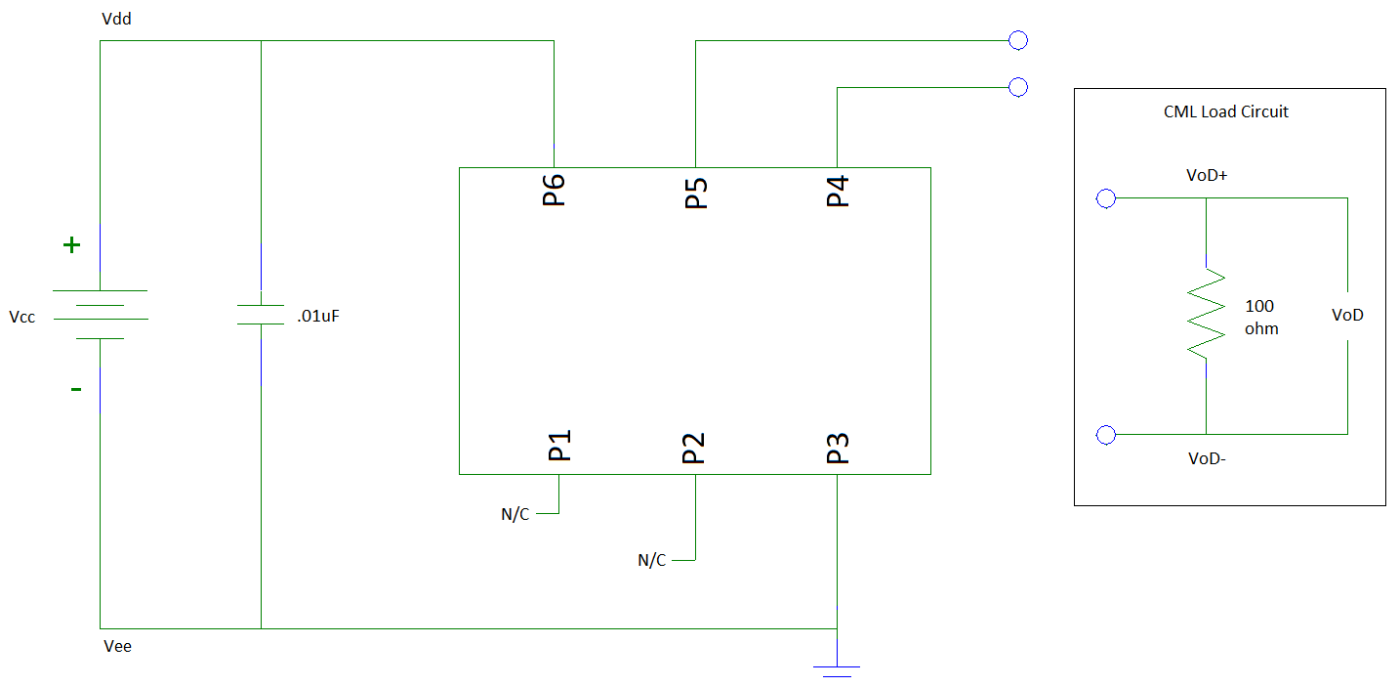


SPECIFICATION FOR 1.8V CML SMT TCXO MtronPTI P/N M6302S041

Output Waveform:



Typical Test Circuit & Load Circuit Diagrams:





SPECIFICATION FOR 1.8V CML SMT TCXO MtronPTI P/N M6302S041

Soldering Conditions:

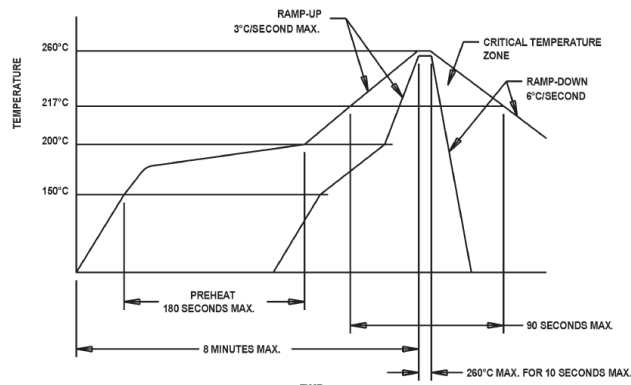
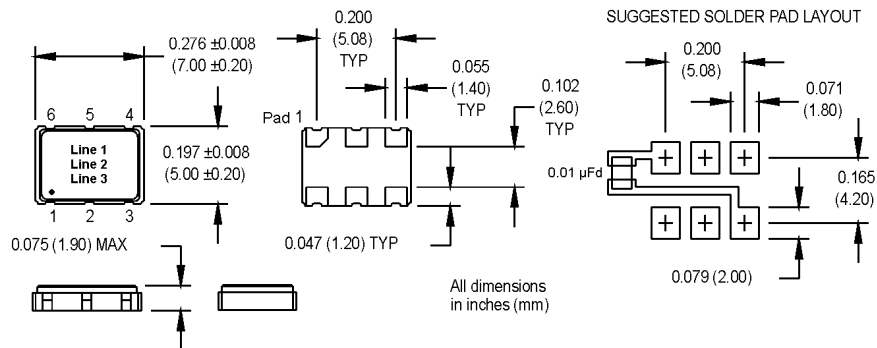


Figure 1

Mechanical, Marking, and Pin Out Information:



Datasheet Revision Table:

Date	Rev.	Author	Details of Revision
09/24/20	0	MM	Original release.