

Specification for a Sinewave Output Thru-Hole OCXO

MtronPTI P/N: XO5083-064

Electrical Specifications:

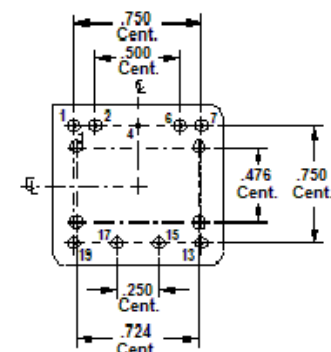
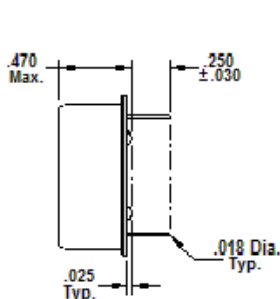
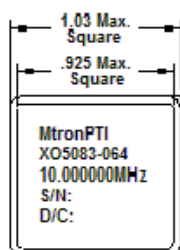
Parameter	Symbol	Min.	Typ.	Max.	Units	Conditions
Nominal Frequency	F _O		10.0000		MHz	
Frequency Stability						
Over Temperature Range				10.0	ppb	Peak-Peak Over -40°C to +85°C
Aging (after 30-days operation)				±1.0	ppb	Daily
				±100	ppb	Yearly
				±1.0	ppm	Over 10-Years
Retrace				±5.0	ppb	24-hours on, 24-hours off, 2-hours on
Holdover				50.0	μsec	Over 3-hours for 30°C
RF Output						
Output Type	Sinewave					
Output Level		+7	+10	+13	dBm	
Output Load		45	50	55	Ω	
Frequency Adjustment						
Adjustment Method	External Voltage					
Tuning Voltage	V _{TUNE}	0		+5.0	V _{DC}	
Tuning Range			±1.0		ppm	@ delivery, will cover all causes for 10-years
Modulation Bandwidth				1	kHz	
Tuning Slope		Positive				
Reference Voltage	V _{REF}		+5.1		V _{DC}	
V _{REF} Source Current				2.0	mA	
SSB Phase Noise						
@ 10MHz (BW = 1Hz) (under static conditions)			-90		dBc/Hz	@ 1Hz Offset
			-120			@ 10Hz Offset
			-140			@ 100Hz Offset
			-150			@ 1kHz Offset
			-155			@ 10kHz Offset
			-155			@ 100kHz Offset
Supply Voltage & Power Consumption						
Supply Voltage	V _{CC}	+9.928	+10.45	10.973	V _{DC}	(V _{CC} ±5%)
Power Consumption				4.9	Watts	@ Start-up
				1.5	Watts	@ +25°C Steady State
Additional Specifications						
Warm-up Time				3	Minutes	@ 0°C to within 0.1ppm of final frequency
G-Sensitivity				3.5	ppb/g	Worst case axis
Oven Ready(Open Collector)	Low	OVEN-NOT-READY				≤ 3mA sink
	High	OVEN-READY				

Specification for a Sinewave Output Thru-Hole OCXO MtronPTI P/N: XO5083-064

Physical & Environmental:

Parameter	Symbol	Min.	Typ.	Max.	Units	Conditions
Operating Temperature	OTR	-40		+85	°C	
Storage Temperature	STR	-55		+85	°C	
Package	Reference Drawing					

Mechanical and Pinout:



PIN	FUNCTION
1	RF OUTPUT
4	CASE GROUND
7	V-TUNE
13	V-REF
17	OVEN READY
19	SUPPLY VOLTAGE
2, 6, 15	N/C

Pin Numbers Shown for Reference Only
All Dimensions are in Inches

Data Sheet Revision Table:

Date	Rev.	Orig.	Details of Revision
08/01/12	2	BRM	Corrected a typographical error in SSB Phase Noise Condition (from 10Hz Offset to 100Hz Offset)
07/31/12	1	BRM	Updated the Outline Drawing and Corrected Various Typographical Errors in the Specification Table
10/26/11	-	BRM	Original Release.