

## Specification for a Sinewave Output Thru-Hole OCXO

### MtronPTI P/N: XO5085-124R

#### Electrical Specifications:

Parameter	Symbol	Min.	Typ.	Max.	Units	Conditions
Nominal Frequency	F <sub>O</sub>		100.000000		MHz	
Frequency Stabilities						
vs. Temperature	ΔF <sub>T</sub> /F	-100		+100	ppb	Over the Operating Temperature Range
vs. Supply voltage variation		-30		+30	ppb	+/-250mV change in supply voltage
Daily Aging		-5		+5	ppb	After 30-days Power On
1 Year Aging		-0.5		+0.5	ppm	
10-Years Aging		-2.0		+2.0	ppm	
Retrace		-20		-20	ppb	After 30-minutes power on following 24-hours off
RF Output						
Output Type		Sinewave				
Output Level		+7.5	+9	+10.5	dBm	
Output Load			50		Ω	±10%
Frequency Adjustment						
Adjustment Method		External Voltage				
Adjustment Voltage	V <sub>TUNE</sub>	0		+10	V <sub>DC</sub>	
Adjustment Range		±0.5			ppm	Over all conditions
Adjustment Slope		Positive				
Additional Parameters						
Phase Noise (Under Static Conditions)				-97	dBc/Hz	10Hz Offset
				-128	dBc/Hz	100Hz Offset
				-158	dBc/Hz	1kHz Offset
				-170	dBc/Hz	10kHz Offset
				-170	dBc/Hz	100kHz Offset
				-170	dBc/Hz	1MHz Offset
				-170	dBc/Hz	10MHz Offset
G-sensitivity			1.5		ppb/g	
Harmonics				-25	dBc	
Spurious				-80	dBc	
Warm-up Time				5	minutes	To within ±0.1ppm of the frequency after 1-hour of operation @ 25°C
Temperature, Supply Voltage & Power Consumption						
Operating Temperature	OTR	-25		+80	°C	Full Specification Compliance
Storage Temperature	STR	-55		+85	°C	
Operating Voltage	V <sub>CC</sub>	+11.4	+12.0	+12.6	V <sub>DC</sub>	
Power Consumption				1.5	Watts	Steady state @ 25°C, In Still Air
				3.6	Watts	@ Warm-up

## Specification for a Sinewave Output Thru-Hole OCXO

### MtronPTI P/N: XO5085-124R

#### Environmental Conditions:

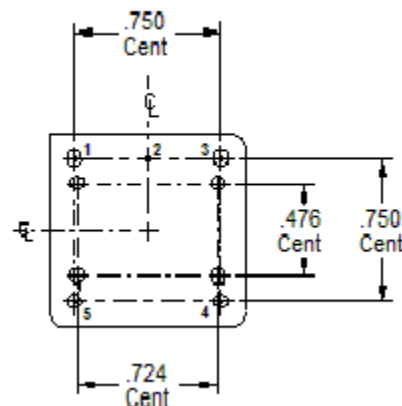
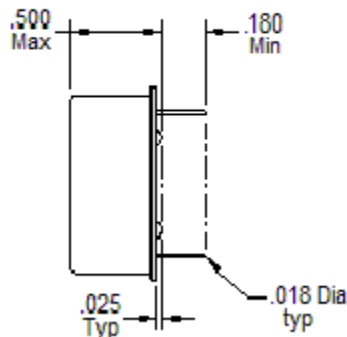
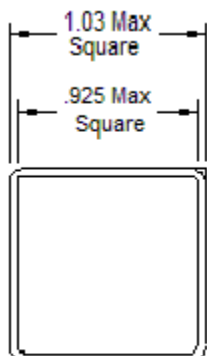
Seal	Hermetic
RoHS	Full RoHS Compliance

#### Mechanical, Marking and Layout Information:

Part Marking
MtronPTI
XO5085-124R
100.0000MHz
Serial Number
Date Code

Legend	
yy	Year
ww	Work Week

Pin	Function
1	RF Output
2	Case Ground
3	V <sub>TUNE</sub>
4	N/C
5	Supply Voltage



#### Data Sheet Revision Table:

Date	Rev.	Orig.	Details of Revision
09-23-20	A	DPD	Original release